



Lillooet Regional Invasive Species Society

Annual Report 2015

Photo: Highway 40



Overview

The Lillooet Regional Invasive Species Society's (LRISS) program continues to focus on two main programs: Outreach & Education and Field Operations. This year we were able to expand our field program to specifically address Aquatic Invasive Species (AIS) with funding from the BC Hydro Fish and Wildlife Compensation Program. This report outlines our major activities and summarizes our successes in the management of invasive species in the Lillooet region.



Photo Credits (L to R top to bottom): Common Bugloss & Common Tansy: BC Ministry of Agriculture; Hoary Alyssum: Flickr; Hoary Cress: Joseph M. Ditomaso, University of California - Davis, Bugwood.org

Field Operations Summary

All field work was focussed on the top 25 invasive plant list released by the Ministry of Forests, Lands and Natural Resource Operations (MoFLNRO; see Appendix 1 for plant list). This list helped us to prioritize our field operations and focus on these species where they were located in our region. New for the 2015 field season, the LRISS crews surveyed Biocontrol Release sites in order to get an understanding of what agents are currently present in our region. Shoreline surveys continued this year primarily for Knotweed (*Fallopia* spp.) and Yellow Flag Iris (*Iris pseudacorus*) infestations. Our field work is summarized in the tables below.

Targeted invasive plants from the MoFLNRO top 25 were selected and the areas where the known sites were located were reviewed again. Table 1 shows which plants were the focus of the 2015 field work including the locations of our targeted inventory.

Table 1. Target invasive plants and general Inventory Locations.

Invasive Plant Name	Latin Name	Inventory Locations
Blueweed	<i>Echium vulgare</i>	Upper McKay FSR (Forest Service Road), Hydro Line above Lillooet, West Pavilion FSR, LaRochelle FSR, Yalakom FSR
Common Bugloss	<i>Anchusa officinale</i>	Highway 12
Common Tansy	<i>Tanacetum vulgare</i>	Gun Lake Road, Slim Creek FSR, Downton Gravel Pit, Blowdown FSR
Hoary Alyssum	<i>Betseroa incana</i>	West Pavilion Road, Hwy 40, Texas Creek Road, Gun Lake Road, Highline, Mud Lake FSR, Texas Creek FSR, Downton & Tergazhi Gravel pits.
Hoary Cress	<i>Cardaria draba</i>	HWYs 12 & 99N, Pavilion-Clinton Road
Leafy Spurge	<i>Euphorbia esula</i>	Pear Lake - Edge Hills Provincial Park
Orange Hawkweed	<i>Hieracium aurantiacum</i>	HWY 99N, Bridge River Hydro Line, Highline, Texas Creek FSR, Sucker Creek Gravel Pit, Downton FSR, Gott Creek FSR, Blowdown FSR
Spotted Knapweed	<i>Centaurea biebersteinii</i>	HWY 40, Gun Lake Road, Fountain Valley Road, Mud Lake FSR
Tansy Ragwort	<i>Senecio jacobaea</i>	Second Creek FSR, Yalakom FSR, LaRochelle FSR, Texas Creek FSR, Carpenter South FSR, Downton FSR
Knotweed	<i>Fallopia spp.</i>	Downton, Carpenter, Tyaughton & Seton Lakes
Yellow Flag Iris	<i>Iris pseudacorus</i>	Downton, Carpenter, Tyaughton & Seton Lakes

It is important to explain that the Tansy Ragwort sites in our region are suspected to actually be the native Dryland Tansy(*Senecio eremophilus* Richardson). This is one of the reasons why we are doing a review of all Tansy Ragwort sites in our region.

Table 2 below summarized the field work completed including the numbers of surveys/ treatment and the areas in hectares (ha).

Table 2. Field Data Summary.

Juris-diction	New IAPP Sites Created	Hectares - New Sites	Sites Surveyed	Sites Surveyed with 0 ha	Biocontrol Sites Surveyed	Number of Bioagents found#	Number of Plants inspected	Mech Treated Sites	Hectares Treated
MoFLNRO	35	0.2699	69	28	31	916	1096	29	0.1281
MOTI	44	1.0604	44	8	7	188	456	45	1.1688
BC Hydro	12	0.0969	3	1	2	8	138	12	0.2129
FWCP-Aquatics	0*	0*	6	0	na	na	na	8	0.0095
Parks	1	0.0018	10	1	none	na	na	3	0.0518
TOTALS	92	1.429	132	38	40	1112	1690	97	1.5711

*These sites are found in other jurisdictions. ##Surveyed for 10 different Bio agents on 6 different plant species (including 3 knapweeds).

Over the 5 jurisdictions, LRISS crews created 92 new invasive plant sites and surveyed 132 sites. All of these were entered into MoFLNRO's Invasive Alien Plant Program's (IAPP) database. Surveys are the review of IAPP sites already in the system. LRISS surveys the sites to see if the infestation size, density and distribution as changed at all. It is important to note that 38 of the 132 sites surveyed had no invasive species found.

All treatments were mechanical in nature which includes primarily hand pulling and digging. Ninety-seven sites were treated which equated to over a hectare and a half removed. As mentioned in previous reports, LRISS has respected the moratorium of chemical use as instituted by the St'at'imc Chief's Council in our region. Our Board of Directors has agreed to move forward with the pilot use of herbicides in our region but first, the consultation and official referral with the 6 northern communities of the St'at'imc nation must occur. Please see outreach and education for further discussion on this topic.

As previously mentioned, LRISS also conducted biocontrol agent monitoring for the first time this field season. There have been inquiries about the status of biocontrol in our region and if there are areas where collections might be made for re-distribution. The biocontrol release program began in our area in the 1970's and 80's. Many release sites are listed in IAPP for our area but many of them have not be re-surveyed in over a decade. Forty IAPP sites were surveyed and over a thousand bioagents were found. The biocontrol release sites were for Dalmatian Toadflax (*Linaria dalmatica*), Spotted Knapweed and Diffuse Knapweed (*Centaurea diffusa*). The agents found include seed boring weevils (*Larinus minutus*, *Larinus obtusus*, *Larinus planus*) targeting knapweed species; root-boring weevils (*Cyphocleonus achates*, *Sphenoptera jugoslavica*) targeting knapweed (*Mogulones cruciger*) targeting Hound's tongue; root-boring moth (*Agapeta zoegana*) targeting knapweed; and a stem-boring weevil (*Mecinus janthinus*) targeting Dalmatian Toadflax.



Spotted Knapweed, Blueweed & Orange Hawkweed. All photos taken by Jacquie Rasmussen

Aquatic Invasive Species

LRISS with the BC Hydro Fish and Wildlife Compensation Program (FWCP) grant has formally initiated an Aquatic Invasive Species (AIS) program. This project focused on creating an AIS Strategy and Action plan as well as a field program. LRISS crews surveyed and treated high priority shorelines. In the past, our program has focused primarily on terrestrial plants, but two invasive plant species of concern are found in aquatic environments: Japanese Knotweed (*Fallopia japonica*.) and Yellow Flag Iris (*Iris pseudacorus*). These species as well as other AIS, like invasive mussels, have the ability to impact salmon spawning sites, riparian habitat as well as important BC Hydro infrastructure. It was essential that we treat the known sites and start a formal AIS program with goals and actions.

The goals of the FWCP project included:

1. Develop an Aquatics Action Plan.
2. Inventory lakes, riparian and wetland habitat for aquatic invasives.
3. Treat selected priority sites in order to gain a better understanding of time and costs for treatment (treatment options and plans will be identified in the Aquatics Action Plan).
4. Partner with stakeholders, local community associations and First Nations to educate their members about invasive identification and best management practices to prevent establishment and spread.
5. Participate in local events to raise awareness of this project and the threat of aquatic invasives in our area (there is an Education and Awareness component of the Action plan).

All of the goals were successfully met for this project. A draft Aquatics Invasive Species Strategy and Action Plan has been developed and LRISS will start implementing it this year.

The field component focused on surveys and treatment. LRISS crews surveyed 150 kilometers of shoreline primarily targeting Knotweed species and Yellow Flag Iris. Downton, Carpenter, Tyaughton and portions of Seton Lake shorelines were surveyed. Seven Yellow Flag Iris sites were treated and approximately 700 kilograms of plant matter was removed. It was clear during our treatment on west Seton Lake and Tyaughton Lake that we would not be able to remove all of the Yellow Flag Iris patches during this project. LRISS crews ensured that all patches were mapped (22) using our iPad GISPro Application for future treatment. IAPP surveys were completed for all of the sites that were treated.

Outreach & Education

LRISS was able to reach over 30,000 with the outreach and education program. This is an increase over last year likely due to the submission of more articles. We submitted 6 articles and 4 features in both local and provincial publications. Articles were submitted to the Bridge River Valley's Mountain Telegraph in addition to BC Nature's winter magazine. Four different invasive species features were published in the Bridge River Lillooet News.

LRISS participated in 21 events and 4 workshops. In our region, there are a variety of community events that allow us to share our message about invasive species and how to prevent their spread. The workshops were a more direct presentation where we informed target audiences about priority invasive species, how they spread and best management practices. Two of these workshops were a direct result of partnerships and are described in the next section.

An Outreach and Education plan for LRISS is currently being prepared to help guide our activities and funding. It is our goal to create a system that will prioritize our activities and use our funding in the most efficient way. The primary impetus for this plan is due to limited funding for outreach and education. The plan will outline all of the potential opportunities for outreach and using the priority ranking system, recommend the activities that will meet a set of goals and values for our program.

Partnerships

LRISS continues to build partnerships as one of the highest priorities for the entire program. In 2015, partnerships played an integral role in projects completed by LRISS. The following projects were successfully completed because of key partnerships.

Project: Xaxli'p Community Forest: Capacity Building Initiative.

Partners: Xaxli'p Community Forest, LRISS.

Funders: BC Capacity Building Initiative, St'at'imc Government Services.

Xaxli'p Community Forest received funding from the BC Capacity Building Initiative. Part of this project was to incorporate invasives into the land management strategic plan and continue the Xaxli'p Community Forest Crews to survey for invasives. The overarching goal

is for Xaxli'p to independently manage invasives in their area. LRISS did 2 days of training with the crews in 2015. We focused on biocontrol identification and monitoring procedures. The LRISS coordinator also contributed to the writing of an invasive strategy to be included in Xaxli'p's land management strategy.

Partners: Tsalalh First Nation, Bridge River Valley Community Association (BRVCA) and Tyaughton Lake Rate Payers.

Funders: BC Hydro Fish and Wildlife Compensation Program

This project is described above under Aquatic Invasives. Our partnering groups wrote letters of support for this project as well as participated in various ways. We were able to expand our outreach for AIS and this project with the help of the BRVCA's Summer Festival and the Tyaughton Ratepayers AGM. LRISS participated in both of these events. BC Hydro and Tsalalh First Nation summer students installed substrate monitors in Seton Lake for invasive mussels. The Tyaughton Rate Payers are very keen on removing Yellow Flag Iris and volunteered their time with us this year to remove patches and survey.

Project: South Chilcotin Mountains Park Invasive Survey & Outreach

Partners: Bridge River Community Association - Trails Committee; Play,Clean,Go, Lillooet Naturalist Society.

Funder: Park Enhancement Fund

Members of the BRVCA-Trails committee were very supportive of this project. Geoff Playfair, a committee member, volunteered his time in the Park to help inventory trails for invasives. This is his second year helping along with Lillooet Naturalist member Greg Smith. Geoff also helped to install signs at Park trail heads. Our partnership with Minnesota's Play,Clean,Go program allowed us to easily design these signs with their graphics (refer to photo below).

Project: Teacher Professional Workshop: Hands-on Learning about Invasives

Partners: Invasive Species Council of BC (ISCBC), School District 74 - Gold Trail

Funder: BC Gaming Grant

Sue Staniforth, the Education Coordinator for ISCBC, collaborated with LRISS to create a Professional Workshop for Teachers about invasives. This pilot is intended to serve as a template for other regional invasive organizations around the province so that they can deliver it to their school district. School District 74 - Gold Trail's Superintendent, Theresa Downs was very supportive. She agreed to host our pilot workshop at a regional professional day and supplied a letter of support to ISCBC for a grant application for Invasive Free Schools. We had 12 participants from Kindergarten to high school level. Our goals was to give them the information, resources and hand's on activities to supplement the new project-based science curriculum that BC is implementing this year. The next workshop will be in the Kootenays.

Project: First Nations Herbicide Workshop

Partners: P'egp'ig'lha Council, T'it'q'et; St'at'imc Government Services, BC Hydro

Funders: BC Hydro

Board recognizes that there is a need to have herbicides in our tool box of treatment options for an effective Integrated Pest Management program but it has also upheld the St'at'imc Chiefs' moratorium on pesticides. As part of our outreach and education and building capacity within the St'at'imc communities, we co-hosted a herbicide workshop. The intended audience was Chief and Council members, Natural resource officers and anyone working in the Referral departments. In collaboration with SGS, P'egg'ig'lha Council and BC Hydro, a workshop was delivered on February 24. The primary goal was to give them technical information about herbicides, the regulatory framework in BC and methods of application in order that they can make informed decisions when referrals for herbicide use are submitted to them. BC Hydro also presented at this workshop because their Pest Management Plan is currently being renewed and has been submitted to the St'at'imc for consultation.

Photo: Trail Head Sign Designed using Play,Clean,Go resources.

STOP INVASIVE SPECIES IN YOUR TRACKS



Help Prevent The Spread Of Invasive Plants And Animals

REMOVE plants, animals & mud from boots, gear, pets & vehicle

CLEAN your gear before entering & leaving the park

STAY on designated roads & trails

USE CERTIFIED or local firewood & hay



STOP INVASIVE SPECIES
IN YOUR TRACKS.
PlayCleanGo.org



www.lriiss.ca
LILLOOET REGIONAL
INVASIVE SPECIES SOCIETY



BC Parks
BC Parks Enhancement Fund

Financial Summary

LRISS secured \$88, 575.05 for our program this year. There were 9 different funders and the revenue from each is shown in Table 3 below. Each year LRISS applies for grants to operate our program. MoFLNRO, MOTI, BC Hydro, SLRD, BC Gaming and SGS are annual contributors. This funding has been relatively stable, however, we do have to apply each year for the funds. FWCP, BC Nature and BC Parks have funded LRISS projects in the last one or two years. LRISS continually searches for new funding especially for outreach and education.

Table 3. Overview of LRISS Primary Funders 2015-16

Source of Revenue	Amount
MoFLNRO - Coordination and Awareness	\$15,000.00
MoFLNRO - Operations	\$19,000
Ministry of Transportation and Infrastructure (MOTI)	\$15,000
Squamish Lillooet Regional District – Area A	\$2,750
Squamish Lillooet Regional District – Area B	\$5,500
St’at’imc Government Services	\$2,500
BC Hydro	\$5,000
BC Hydro Fish and Wildlife Compensation Program	\$10,000
Park Enhancement Fund	\$4414.33
BC Gaming	\$8,000
BC Nature/Federation of BC Naturalists	\$1410.72
TOTAL	\$88,575.05

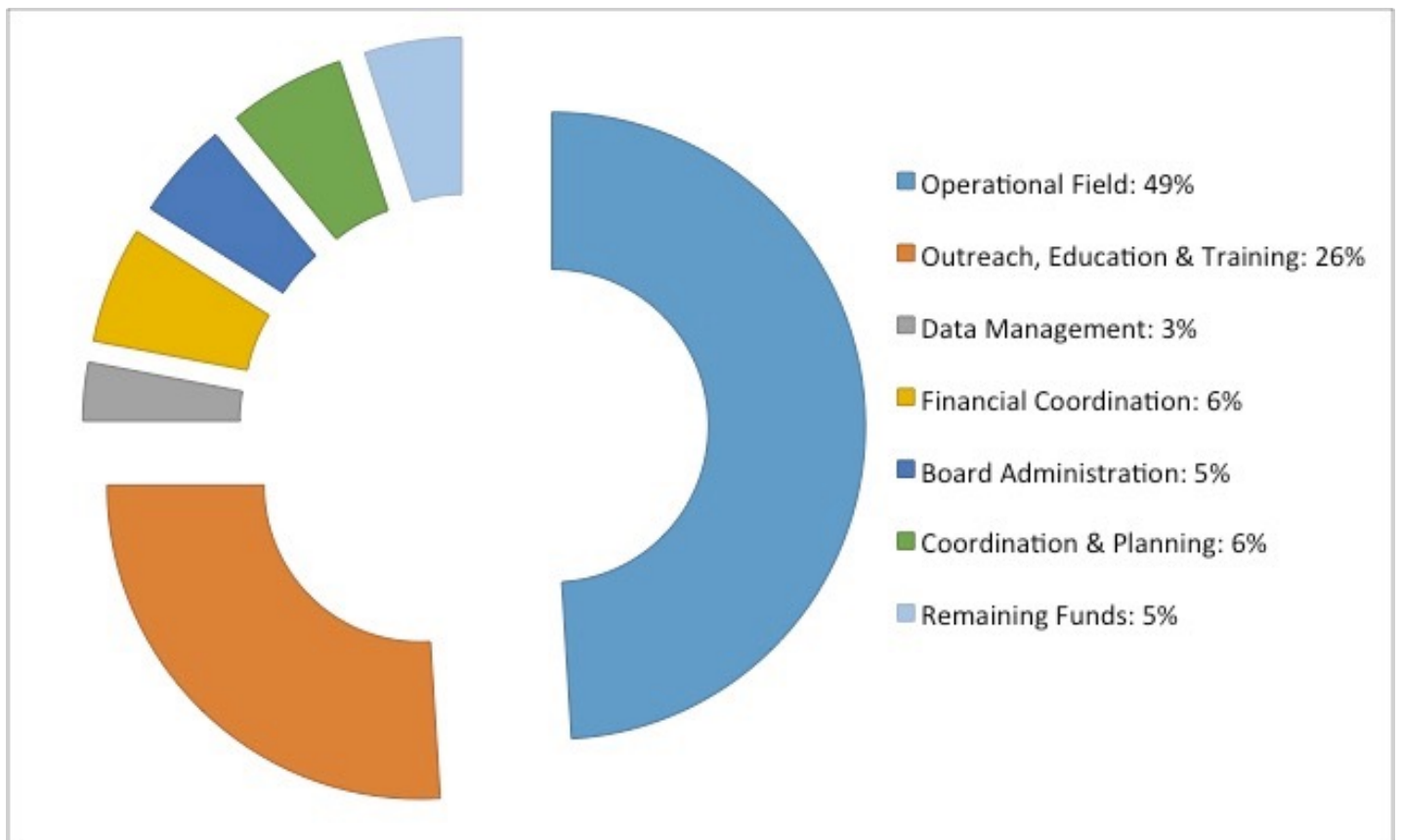
Our fiscal year starts annually on April 1 and runs until March 31. All expenditures are tracked using Sage Accounting program. Annual work plans are created using budgets for each funder and Sage tracks our expenses for each funder over a number of categories. In Appendix 3, the Income report for this fiscal shows all of the accounts, revenue and expenses tracked for the the 2015-2016 fiscal year.

In Chart 1, the expenditures for the 2015-2016 have been summarized into 6 categories. The most amount of program dollars was spent on field operations. This is an increase over the previous years due to the amount of funding acquired for these activities. LRISS received a grant from FWCP and \$4000 extra operational dollars from MOTI.

The outreach, education and training category was the second highest overall expenditure of the LRISS program. The percentage of our program dollars is slightly lower than previous years due to less funding.

The other smaller categories include data management, financial coordination, Board administration, and overall coordination and planning. Data management includes the coordination and back-up of all field data on the Ipads as well as data entry in the MoFLNRO's IAPP database. Grant writing and all financial organization is included in the financial coordination category. Board administration includes insurance, the Annual General Meeting and Board meeting preparation and expenses. Overall coordination and planning is primarily comprised of communications and administrative duties by the coordinator.

Chart 1. Summary of 2015 Expenditures



Appendix 1

MoFLNRO BC's Top 25 List of Invasive Plants

Provincial Rank	Invasive Plant Species
1	Bohemian knotweed
1	Giant knotweed
1	Japanese knotweed
2	Giant hogweed
3	Himalayan knotweed
4	Marsh plume thistle
5	Rush skeletonweed
6	Yellow flag iris
7	Garlic mustard
8	Tansy ragwort
9	Field scabious
10	Common bugloss
11	Puncturevine
12	Common tansy
13	Spotted knapweed
14	Wild chervil
15	Scotch broom
16	Blueweed
17	Hoary alyssum
18	Policeman's helmet/himalayan balsam
19	Himalayan blackberry
20	Teasel
21	Leafy spurge
22	Purple loosestrife
23	Hoary cress
24	Orange hawkweed
24	Whiplash hawkweed
25	Hawkweed spp
25	Tall Yellow Hawkweeds

SOUTHERN REGION		
2ND TIER	# sites	RANK
Scotch thistle	30	1
Sulphur cinquefoil	4,459	2
Meadow knapweed	91	3
Longspine sandbur	14	4
Yellow archangel		5
Scentless chamomile	480	6
Gorse		
Common fennel		
Mountain bluet		
Oxeye daisy		
Burdock		
Bur chervil		
Milk thistle		
Daphne/Spurge laurel		
Carpet burweed		

Appendix 2.

Outreach and Education List 2015-2016

Date	Event	Approximate Reach	Category
15-Jul	Radio Lillooet Interview - Part of Old Planet, Young People: Listen to it at this link: http://radiolillooet.ca/s/old-planet-young-people/	25	Communications/Media
July	Mountain Telegraph Submission	185	Communications/Media
August	Mountain Telegraph Submission	185	Communications/Media
September	Mountain Telegraph Submission	185	Communications/Media
October	Mountain Telegraph Submission	185	Communications/Media
Ongoing	Social Media posting ~100 posts	500	Communications/Media
Winter 2015	BC Nature Magazine	5700	Communications/Media
August	Bridge River Lillooet News Features (4)	1900	Communications/Media
April	Bridge River Valley Pitch in Day	20	Presentations/Event
09-May	St'at'imc Gathering	100	Presentations/Event
29-May	Walking with the Smolts	300	Presentations/Event
07-Jun	Brownie Camp Activity	20	Presentations/Event
15-Jun	Xaxli'p Elders Presentation	15	Presentations/Event
17-Jun	Xwisten Elders Presentation	15	Presentations/Event
27-Jun	Lillooet Garden Tour	110	Presentations/Event
05-Jul	Tyaughton Lake Ratepayers AGM	10	Presentations/Event
24-Jul	Peggigha Council Presentation	15	Presentations/Event
25-Jul	Apricot Festival & Lillooet Sturgeon Derby	200	Presentations/Event
20-Jul-15	Lillooet Food Matters Farm Tour	15	Presentations/Event
02-Aug	Bridge River Summer Festival	75	Presentations/Event
09-Aug	Lion's Fishing Derby	60	Presentations/Event
09-Sep	Ad Hoc Lillooet Tourism Committee Meeting	20	Presentations/Event
11-Sep	Jewel Bridge Weed Pull & Outreach	5	Presentations/Event
13-Sep	Salmon in the Canyon	75	Presentations/Event
06-Nov	Lillooet Livestock Association meeting	10	Presentations/Event
17-Jan-15	Lillooet Naturalist Society AGM	19	Presentations/Event
19-Mar-15	Seedy Saturday	100	Presentations/Event
14-Aug-15	Tyaughton Lake Weed Pull	5	Presentations/Event
21-Jan-16	Chamber of Commerce Meeting	20	Presentations/Event
19-Mar-16	Lillooet Food Matters Seedy Saturday	125	Presentations/Event
June	Lillooet Tourism Guide	20,000	Publication
Summer 2016	Bridge River Community Bus Sign	100	Publication
Fall 2016	Parks Trail Head signs - 2 new locations	50	Publication
Fall 2016	Bridge River Kiosk Sign	50	Publication
18-Jun	MOTI Contractor -Interior Roads Crew Training	10	Workshop
06-May-15	LRISS AGM and Speakers	25	Workshop
August 4-5, 2015	Xaxli'p Community Forest Training	8	Workshop
19-Feb-16	Lillooet Teachers Professional Workshop on Invasives	12	Workshop
24-Feb-16	Herbicide Workshop	20	Workshop
Total Reach		30299	
Staff Education/Professional Development			
08-May-15	LRISS AGM & Speakers		
May 28-29, 2015	OASSIS AGM & Speakers		
June 22-24, 2015	Committees Operational Field Tour and Speakers		
Feb 1&2, 2016	ISCBC Educational Forum		

Appendix 3

Financial Statements for LRISS 2015_16 Fiscal Year

Lillooet Regional Invasive Species Society Income Statement 01/04/2015 to 31/03/2016

REVENUE	
Revenue from Funding	
ADMIN 10%	6,154.45
MOFLNRO - COORDINATION	15,000.00
MOFLNRO - OPERATIONS	17,100.00
MOTI	13,500.00
HYDRO	4,500.00
SLRD- Area A	2,450.00
SLRD Area B	4,950.00
St'at'imc Gov't Services	3,277.20
BC Gaming Grant	8,000.00
GST Rebate	-1,154.45
BC NATURE	1,411.00
PARKS	4,414.33
FWCP	10,100.00
XAXLI'P	1,388.08
Net Funding Revenue	91,090.61

Other Revenue

Bank Interest Revenue	10.67
Miscellaneous Revenue	400.00
Total Other Revenue	410.67

TOTAL REVENUE		91,501.28
EXPENSE		
Operating Expenses		
EI Expense	295.14	
CPP Expense	439.53	
WCB Expense	17.80	
Retained Earn - Office and Outreach	200.00	200.00
TOTAL RET EARNINGS EXPENSES		952.47
MofLNRO - Coord - Accounting	287.50	
MofLNRO- Coord -Fees/License/Permit	1,800.00	
MofLNRO - Coord - Meals	105.00	
MofLNRO - Coord - Meeting Expense	1,049.85	
MofLNRO - Coord - Mileage - kms	72.00	
MofLNRO - Coord - Office & Outreach	179.35	
TOTAL MOFLNRO - COORD EXPENSES		3,493.70
MofLNRO - Ops - Equipment	771.26	
MofLNRO - Ops- Mileage - kms	2,164.92	
TOTAL MOFLNRO - OPS EXPENSES		2,936.18
MOTI - Mileage - kms	2,270.40	
TOTAL MOTI EXPENSES		2,270.40
Hydro - Equipment	29.99	
Hydro - Mileage - kms	582.00	
TOTAL HYDRO EXPENSES		611.99

SLRD - A - Mileage - kms	260.40	
SLRD - A - Office & Outreach	310.88	
TOTAL SLRD A EXPENSES		571.28
SLRD - B - Accounting	333.50	
SLRD - B - Equipment	23.83	
SLRD - B - Meals	229.00	
SLRD - B - Meeting Expense	190.00	
SLRD - B - Mileage - kms	960.00	
SLRD - B - Office & Outreach	25.00	
SLRD - B - Training	210.00	
TOTAL SLRD B EXPENSES		1,971.33
St' at' imc Govt Serv - Mileage-kms	217.80	
TOTAL ST'AT'IMC GOVT EXPENSES		217.80
BC Gaming - Advertising	825.00	
BC Gaming - Equipment	80.91	
BC Gaming - Mileage - kms	21.60	
BC Gaming - Office & Outreach	2,665.99	
TOTAL BC GAMING EXPENSES		3,593.50
Parks - Accomodations	300.00	
Parks - Equipment	91.62	
Parks - Meals	278.30	
Parks - Mileage - kms	242.40	
Parks - Office & Outreach	688.35	
Parks - Transportation	115.00	
TOTAL PARKS EXPENSES		1,715.67
BC Nature - Advertising	1,355.64	
TOTAL BC NATURE EXPENSES		1,355.64
ADMIN - Accomodations	320.80	
ADMIN - Accounting	1,259.25	
ADMIN - Fees/Licenses/Permits	187.00	
ADMIN - Meeting Expenses	50.00	
ADMIN - Mileage - kms	522.00	
ADMIN - Office & Outreach	298.18	
ADMIN - Training	1,612.00	
TOTAL ADMIN EXPENSES		4,249.23
FWCP - Equipment	1,630.00	
FWCP - Mileage - kms	667.20	
FWCP - TOTAL FWCP EXPENSES		2,297.20
Total Operating Expenses		26,236.39
Contract Wages		
MofLNRO - Coord - Co-Comm	2,999.25	
MofLNRO - Coord - Coord - Meeting	3,538.50	
MofLNRO - Coord - Coord - Planning	1,534.50	
MofLNRO - Coord - Coord - Education&Awareness	852.50	
MofLNRO - Coord - Data	141.90	
MofLNRO - Coord - Fund - Coord	1,061.75	
MofLNRO - Coord - Fund - Grants	1,334.25	
TOTAL MOFLNRO- Coord WAGES		11,462.65
MofLNRO - Ops- Coord - Comm	100.75	

MofLNRO - Ops - Coord - Meeting	93.00	
MofLNRO - Ops - Coord- Plann	384.50	
MofLNRO - Ops - Inventory	5,712.50	
MofLNRO - Ops - Treatment	1,703.75	
MofLNRO - Ops - Monitor	4,480.00	
MofLNRO - Ops - Data	1,687.50	
TOTAL MofLNRO - Ops WAGES		14,162.00
MOTI - Coord - Planning	412.50	
MOTI - Coord - Communication	217.00	
MOTI - Coord - Meeting	25.00	
MOTI - Inventory	6,485.75	
MOTI - Treatment	2,554.50	
MOTI - Monitor	1,355.00	
MOTI - Data	146.00	
MOTI - Funding - Coord	15.50	
TOTAL MOTI - WAGES		11,211.25
HYDRO - Coord - Planning	139.50	
HYDRO - Coord - Communication	124.00	
HYDRO - Education & Awareness	124.00	
HYDRO - Inventory	2,507.25	
HYDRO - Treatment	452.75	
HYDRO - Monitor	168.00	
HYDRO - Data	302.26	
HYDRO - Funding - Coord	7.75	
TOTAL HYDRO - WAGES		3,825.51
SLRD - A - Coord - Coomunication	116.25	
SLRD - A - Coord - Meeting	38.75	
SLRD A - Coord - Planning	31.00	
SLRD A - Education & Awareness	538.25	
SLRD - A - Funding - Grants	15.50	
TOTAL SLRD A - WAGES		739.75
SLRD - B - Coord - Communication	178.25	
SLRD - B - Coord - Meeting	341.00	
SLRD - B - Coord- Planning	77.50	
SLRD B - Education & Awareness	608.50	
SLRD B - Monitor	125.00	
SLRD B - Funding - Grants	15.50	
TOTAL SLRD B - WAGES		1,345.75
St'at'imc - Coord - Communication	77.50	
St'at'imc - Coord - Meeting	689.75	
St'at'imc' - Coord - Planning	395.25	
St'at'imc - Edcation & Awareness	1,123.75	
St'at'imc - Data	62.00	
St'at'imc - Funding - Grants	7.75	
TOTAL SGS - WAGES		2,356.00
BC Gaming - Coord - Communication	15.50	
BC Gaming - Coord - Meeting	315.25	
BC Gaming - Coord - Planning	25.00	
BC Gaming - Education & Awareness	3,498.84	

BC Gaming - Funding - Coord	124.00	
TOTAL BC GAMING - WAGES		3,978.59
Parks - Coord - Communication	23.25	
Parks - Coord - Planning	178.25	
Parks - Education & Aware	416.00	
Parks - Inventory	1,923.25	
Parks - Treatment	162.50	
TOTAL PARKS - WAGES		2,703.25
ADMIN - Coord- Communication	457.25	
ADMIN - Coord - Meeting	527.00	
ADMIN - Coord - Planning	201.50	
ADMIN - Education & Awareness	90.25	
ADMIN - Data	7.75	
ADMIN - Funding - Coordination	542.50	
ADMIN - Funding - Grants	31.00	
TOTAL ADMIN - WAGES		1,857.25
FWCP - Coord - Communication	604.50	
FWCP - Coord - Planning	895.75	
FWCP - Inventory	1,456.75	
FWCP - Treatment	4,209.75	
FWCP - Monitor	25.00	
FWCP - Data	69.75	
FWCP - Funding - Grants	255.75	
TOTAL FWCP - WAGES		7,517.25
Wages - SubTotal	61,159.25	61,159.25
Total Contract Wages		61,159.25
TOTAL EXPENSES		87,395.64
NET INCOME		4,105.64
Generated On: 25/04/2016		